



## Mouse Anti-Human $\alpha$ -synuclein Monoclonal Antibody Datasheet

**Product Name:** mAb anti-Human  $\alpha$ -synuclein

**Clone No.:** 4C1

**Catalogue No.:** MO-M40097B

**Quantity:** 0.5 mg/vial x 1

**Description:** Mouse monoclonal antibody to human  $\alpha$ -synuclein

**Purification:** Protein G affinity purified

**Product type:** Primary antibody

**Target Protein:** Human  $\alpha$ -synuclein

**Immunogen:** Recombinant human  $\alpha$ -synuclein (1-140 aa) expressed in E. coli.

**Fusion Myeloma:** Sp2/0-Ag14

**Specificity:** This antibody recognizes human  $\alpha$ -synuclein epitope YQDYEP(E).

**Species Reactivity:** Human

**Host / Isotype:** Mouse, IgG2a, Kappa

**Formulation:** Lyophilized from a solution in 0.01M PBS, pH 7.2

**Reconstitution:** Double distilled water is recommended to adjust the final concentration to 1.00mg/mL.

**Storage:** Store at -20°C

**Research Area:** Parkinson's disease, neurodegenerative diseases

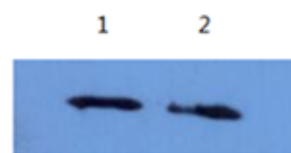
**Background:**  $\alpha$ -synuclein is a protein of unknown function. It is mainly found in neural tissue. There is a lipid-binding motif

similar to that of Apolipoproteins on its N-terminal. A hydrophobic region that is the non-beta component found in amyloid aggregation in Alzheimer's disease is located at the central region of the protein. The abnormal aggregation of  $\alpha$ -synuclein on brain tissue is called Lewy bodies, which are found in Parkinson's disease, dementia and multiply system atrophy. Mutated  $\alpha$ -synuclein gene is found to be associated with rare familial form of Parkinson's disease.

**Applications:** **Indirect ELISA:** The antibody reacts with human  $\alpha$ -synuclein.

**Western Blot:** Detect recombinant  $\alpha$ -synuclein ( $\alpha$ -SYN) using antibody 4C1 at 5 $\mu$ g/mL dilution.

Western blot- $\alpha$ -synuclein( $\alpha$ - SYN)



1&2  $\alpha$ - synuclein ( $\alpha$ -SYN) at 500ng/well

**References:** If research is published using this product, please inform Anogen in order to cite the reference on this datasheet. Anogen will provide one unit of product in the same category as gratitude.

This product is for **LABORATORY RESEARCH USE** and further manufacture **ONLY**, and cannot be administrated to human and animals for use in diagnostic and therapeutic procedures.

Manufactured by ANOGEN - A Division of YES Biotech Laboratories Ltd.