

**Mouse Anti-Human Programmed Death Ligand-1 Monoclonal Antibody Datasheet****Product Name: mAb anti-Human PDL-1****Clone No.: 11D11****Catalogue No.: MO-L40044M****Quantity: 0.5 mg/vial**

Description: Mouse monoclonal antibody (mAb) to human programmed death ligand-1 (PDL-1), or mouse mAb to B7H1, or mouse mAb to human CD274.

Purification: Protein G affinity purified

Product Type: Primary antibody

Target Protein: Human programmed death ligand-1 (PDL-1), also known as B7H1 or CD274.

Immunogen: Human cell expressed recombinant PDL-1 (Phe19-Arg238) with poly-histidine tag at C-terminus.

Fusion Sp2/O-Ag14

Myeloma:

Specificity: Reactive with human programmed death ligand-1 (PDL-1).

Species Human, others not tested.

Reactivity:

Host / Isotype: Mouse, IgG1 Kappa

Formulation: Lyophilized from a solution in 0.01M PBS, pH 7.2

Reconstitution: Double distilled water is recommended to adjust the final concentration to 1.00mg/mL.

Storage: Store at -20°C. Avoid repeated freeze/thaw cycles after reconstitution.

Research Area: Immunosuppression. Cancer immunotherapy.

Background: Programmed Death Ligand-1 (PDL-1), a

40KD transmembrane protein, is a ligand of immune checkpoint protein Programmed Death-1 (PD-1). During T-cell receptor signalling, the binding of PDL-1 to PD-1 transmits an inhibitory signal to activated T-cells to decrease their proliferation. PDL-1 is also believed to play a role in the generation and regulation of Treg cells, and in the enhancement of Treg cell function. PDL-1/PD-1 pathway is important to immune suppression, such as self-tolerance, suppression of immune-rejection during pregnancy and allograft, and immune evasion by cancers. Upregulation of PD-L1 has been found to be associated with many cancer types. For example, increased PDL-1 expression has been shown to be related to tumor aggressiveness and higher mortality in patients with renal cell carcinoma, and related to significantly poorer prognosis and lower intraepithelial CD8+ T-lymphocyte count in patients with ovarian cancer. Antibodies that block the PDL-1 /PD-1 pathway have been extensively studied in clinical trials, and some have been approved as immunotherapy for cancer.

Application: **Indirect ELISA:** The antibody reacts with recombinant PDL-1 in indirect ELISA.

Western Blot: Anti-PDL-1 clone 11D11 detected 40ng recombinant PDL-1 on Western Blot. The blot was stained with HRP substrate 4-Chloro-1-Naphthol.

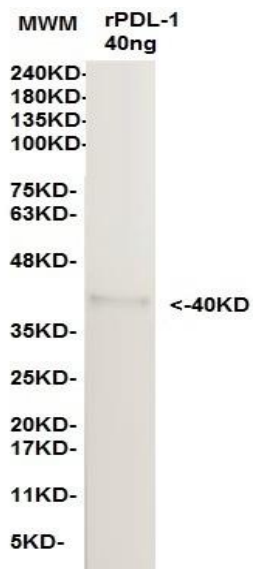
This product is for **LABORATORY RESEARCH USE** and further manufacture **ONLY**, and cannot be administered to human and animals for use in diagnostic and therapeutic procedures.

Manufactured by **ANOGEn - A Division of YES Biotech Laboratories Ltd.**



ANOGEN - A Division of YES Biotech Laboratories Ltd.

2355 Derry Road East, Unit 23, Mississauga, ON, Canada L5S 1V6 • Tel: (905) 677-9221 • Fax: (905) 677-0023



References:

If research is published using this product, please inform Anogen in order to cite the reference on this datasheet. Anogen will provide one unit of product in the same category as gratitude.

This product is for **LABORATORY RESEARCH USE** and further manufacture **ONLY**, and cannot be administered to human and animals for use in diagnostic and therapeutic procedures.

Manufactured by ANOGEN - A Division of YES Biotech Laboratories Ltd.