



## ANOGENT - A Division of YES Biotech Laboratories Ltd.

2355 Derry Road East, Unit 23, Mississauga, ON, Canada L5S 1V6 • Tel: (905) 677-9221 • Fax: (905) 677-0023

### Mouse Anti-CA 125 Monoclonal Antibody Datasheet

**Product Name:** mAb anti-CA 125

**Clone No.:** 110

**Catalogue No.:** MO-T40012A

**Quantity:** 0.5 mg/vial

**Description:** Mouse monoclonal antibody to human cancer antigen 125 (CA125)

**Purification:** Protein G affinity purified

**Product Type:** Primary antibody

**Target Protein:** Human CA 125

**Immunogen:** Human CA 125 protein

**Fusion** Sp2/O-Ag14

**Myeloma:**

**Specificity:** React with human CA 125.

**Reactivity:** Human, others not tested

**Species** Not available

**Reactivity:**

**Host / Isotype:** Mouse, IgG1 Kappa

**Formulation:** Lyophilized from a solution in 0.01M PBS, pH 7.2

**Reconstitution:** Double distilled water is recommended to reconstitute the antibody.

**Storage:** Store at -20°C

**Research** Oncology  
**Area:**

**Background:** Cancer antigen 125 (CA125), also called mucin16, is a heterogeneous mixture of glycoproteins with a molecular weight range of 200-1000 kDa. Its C-end is attached to cell membrane. The extra-cellular region of the molecule can be

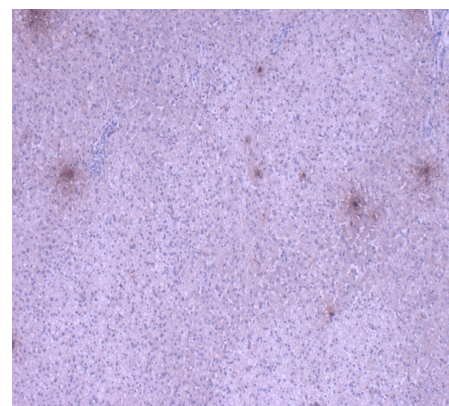
released from cell surface by proteolytic cleavage. CA125 was found to be elevated in the blood of patients with advanced ovarian cancer. It is very useful for monitoring the effects of ovarian cancer therapy and is used for predicting the outcome of the patients after treatment.

#### Applications:

**1. ELISA:** This antibody, when used at 0.125ng/mL or higher concentrations, can recognize ELISA plate wells coated with CA125 at 5 international unit per well.

**2. IHC:** The antibody showed positive results (Fig 1 & 2) on tissue sections of liver cancer and squamous cell lung cancer. The sections were treated by heat induced epitope retrieval before primary antibody was added. The secondary antibody was an HRP-labelled goat anti-mouse IgG antibody.

**Fig 1:** IHC result on liver cancer section.



This product is for **LABORATORY RESEARCH USE** and further manufacture **ONLY**, and cannot be administrated to human and animals for use in diagnostic and therapeutic procedures.

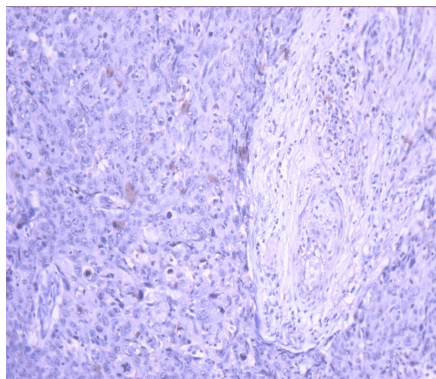
Manufactured by ANOGENT - A Division of YES Biotech Laboratories Ltd.



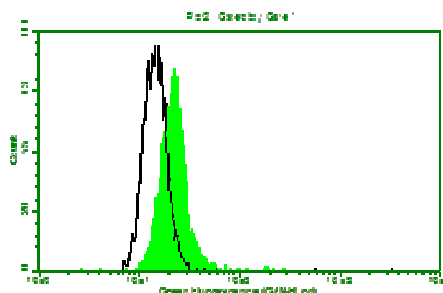
## ANOGEN - A Division of YES Biotech Laboratories Ltd.

2355 Derry Road East, Unit 23, Mississauga, ON, Canada L5S 1V6 • Tel: (905) 677-9221 • Fax: (905) 677-0023

**Fig 2:** IHC result on squamous cell lung carcinoma section.



### 3. Fluorescence flow cytometry:



Above is the histogram of HeLa cells stained with 10µg/mL mouse anti-CA 125 mAb clone 110 and a fluorescence labelled secondary antibody. Black line represents the histogram of HeLa cells stained with control antibody, mouse anti-TB 38Kd

antigen mAb clone B12F8 (MO-I40021D).

### References:

If research is published using this product, please inform Anogen in order to cite the reference on this datasheet. Anogen will provide one unit of product in the same category as gratitude.

This product is for LABORATORY RESEARCH USE and further manufacture ONLY, and cannot be administered to human and animals for use in diagnostic and therapeutic procedures.

Manufactured by ANOGEN - A Division of YES Biotech Laboratories Ltd.