



ANOGENT - A Division of YES Biotech Laboratories Ltd.

2355 Derry Road East, Unit 23, Mississauga, ON, Canada L5S 1V6 • Tel: (905) 677-9221 • Fax: (905) 677-0023

Mouse Anti- Amyloid Beta Peptide 40 Monoclonal Antibody Datasheet

Product Name: mAb anti-Amyloid Beta Peptide 40

Clone No.: 4B1

Catalogue No.: MO-M40095C

Quantity: 0.5 mg/vial

Description: Mouse monoclonal antibody to C-terminal of amyloid beta peptide 40 (A β 40)

Purification: Protein G affinity purified

Product Type: Primary antibody

Target Protein: Amyloid beta peptide 40

Immunogen: Full length A β 40

Fusion Myeloma: Sp2/O-Ag14

Specificity: This antibody recognizes the C-terminal sequence (GLMVGGVV) of A β 40 and full length A β 40, but does not react with N-terminal peptide (DAEFRHDS), or full length human A β 42 and A β 43.

Species Reactivity: Human and other primates; mouse, rat

Host / Isotype: Mouse, IgG2a Kappa

Formulation: Lyophilized from a solution in 0.01M PBS pH7.2

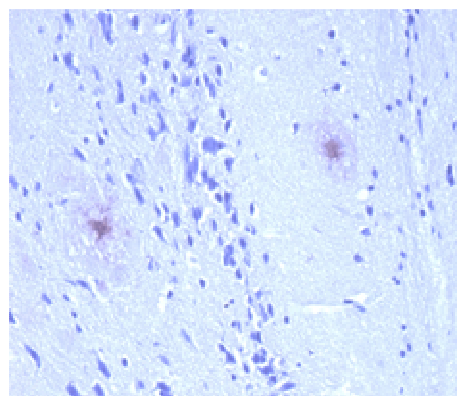
Reconstitution: Double distilled water is recommended to adjust the final concentration to 1.00 mg/mL.

Storage: Store at -20°C

Research Area: Aging and neurodegenerative diseases

Background: A β 40 and A β 42 are the two major amyloid peptides formed after cleavage of amyloid precursor protein. In blood and cerebrospinal fluid, the concentration of A β 40 is about 10 times higher than that of A β 42. A β 40 is the main component in the amyloid deposit of vascular amyloid angiopathy. Detection of A β 40 is useful for the predication of Alzheimer's disease. Lower than normal A β 42/A β 40 ratio in cerebrospinal fluid was found to be associated with increased risk of mild cognitive impairment and Alzheimer's disease.

Applications: **IHC:** The picture below shows the 40x amplified brain tissue section from transgenic Alzheimer's disease mouse model after IHC staining with clone 4B1.



(Procedure: After heat induced epitope retrieval, formalin-fixed paraffin-embedded brain tissue section from 12

This product is for **LABORATORY RESEARCH USE** and further manufacture **ONLY**, and cannot be administrated to human and animals for use in diagnostic and therapeutic procedures.

Manufactured by ANOGENT - A Division of YES Biotech Laboratories Ltd.



ANOGEN - A Division of YES Biotech Laboratories Ltd.

2355 Derry Road East, Unit 23, Mississauga, ON, Canada L5S 1V6 • Tel: (905) 677-9221 • Fax: (905) 677-0023

month old APPswe/PSEN1dE9 mouse was incubated at 4°C with 0.01mg/ml 4B1 overnight. Bound antibody was detected using a HRP-labeled goat anti-mouse antibody.)

References:

If research is published using this product, please inform Anogen in order to cite the reference on this datasheet. Anogen will provide one unit of product in the same category as gratitude.

This product is for LABORATORY RESEARCH USE and further manufacture ONLY, and cannot be administrated to human and animals for use in diagnostic and therapeutic procedures.

Manufactured by ANOGEN - A Division of YES Biotech Laboratories Ltd.

Page 2 of 2 page(s)

S7.5 (01)

To place order, please contact us by phone, fax or by email: info@anogen.ca,
or with our secure online store: www.anogen.net