



ANOGENT - A Division of YES Biotech Laboratories Ltd.

2355 Derry Road East, Unit 23, Mississauga, ON, Canada L5S 1V6 • Tel: (905) 677-9221 • Fax: (905) 677-0023

Mouse Anti-Human CRP Monoclonal Antibody Datasheet

Product Name: mAb anti-human CRP

Clone No.: S5G1

Catalogue No.: MO-M40023E

Quantity: 0.5 mg/vial

Description: Mouse monoclonal antibody to human C reactive protein (CRP)

Purification: Protein G affinity purified

Product Type: Primary antibody

Target Protein: Human CRP

Immunogen: Purified CRP from human pleural fluid

Fusion Myeloma: Sp2/O-Ag14

Specificity: No detectable cross-reaction with human normal serum proteins.

Species Reactivity: Human, others not tested

Host / Isotype: Mouse, IgG1 Kappa

Formulation: Lyophilized from a solution in 0.01M PBS, pH 7.0

Reconstitution: Double distilled water is recommended to adjust the final concentration to 1.00mg/mL.

Storage Condition: Store at -20°C

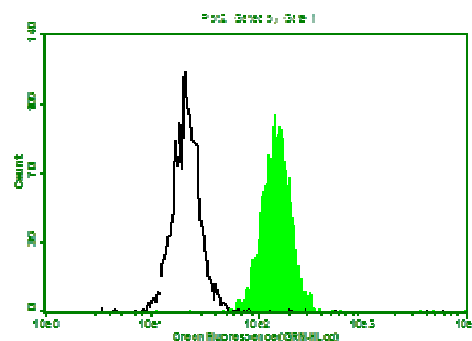
Research Area: Inflammatory and cardiovascular diseases

Background: C-reactive protein (CRP) is an acute phase protein that is comprised of five identical 23kDa subunits. The protein increases rapidly in response to inflammation, trauma and infection, and

drops to normal level when the conditions no longer present. CRP plays a role in innate immunity by binding to phosphocholine on the surface of damaged cells or certain microbes, and activating the C1q complex in complement system. CRP is primarily produced by hepatocytes under the stimulation by inflammatory cytokines including IL-6 and TNF-alpha. Elevated CRP level is implicated with bacterial infection, autoimmune diseases, trauma and post-surgical complications. Study has shown that people with higher CRP baseline have a higher disposition to develop cardiovascular diseases such as heart attack and stroke.

Applications:

Fluorescence flow cytometry:



Above is the histogram of Hela cells stained with 10µg/mL anti-Human CRP mAb S5G1 and fluorescence labelled secondary antibody. Black line represents the histogram of Hela cells stained with isotype control, mouse anti-TB 38Kd antigen monoclonal

This product is for **LABORATORY RESEARCH USE** and further manufacture **ONLY**, and cannot be administrated to human and animals for use in diagnostic and therapeutic procedures.

Manufactured by ANOGEN - A Division of YES Biotech Laboratories Ltd.

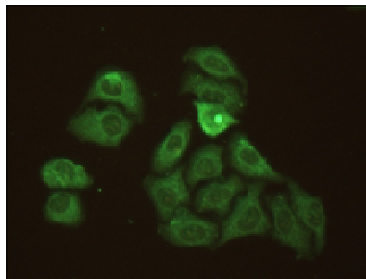


ANOGEN - A Division of YES Biotech Laboratories Ltd.

2355 Derry Road East, Unit 23, Mississauga, ON, Canada L5S 1V6 • Tel: (905) 677-9221 • Fax: (905) 677-0023

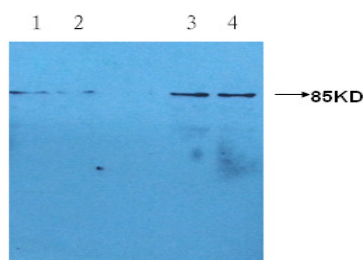
antibody (MO-I40021D, B12F8).

Immuno-fluorescence staining:



Methanol-fixed HeLa cells stained with 10µg/mL anti-Human CRP mAb S5G1 and fluorescence labelled secondary antibody.

Western blotting:



Mouse anti-human CRP monoclonal antibody (S5G1) was used at 1:1000 dilution. Lane1 & 2: HepG2 cell lysate. Lane3 & 4: HeLa cell lysate.

ELISA: This antibody reacts with human

CRP.

References:

If research is published using this product, please inform Anogen in order to cite the reference on this datasheet. Anogen will provide one unit of product in the same category as gratitude.

This product is for **LABORATORY RESEARCH USE** and further manufacture **ONLY**, and cannot be administrated to human and animals for use in diagnostic and therapeutic procedures.

Manufactured by ANOGEN - A Division of YES Biotech Laboratories Ltd.